

Biologics Explorer Software 6.0.3 Release Notes



Introduction

Thank you for using the Biologics Explorer software.

Read this document carefully for information about changes, new features, and corrected and known issues. The information in this document makes the installation and use of the Biologics Explorer software easier.

The Biologics Explorer software supports the characterization of therapeutic protein and nucleotide therapeutic candidates from these analysis approaches:

- Protein mapping that uses measurements of intact molecules, partially cleaved intact molecules, and reduced intact molecules (TOF MS)
- Intact mass mapping of nucleotide molecules (TOF MS)
- Peptide mapping that uses data-dependent acquisition (DDA) measurements of enzymatically digested proteins (TOF MS/MS)
- Top/middle-down protein sequencing with tandem mass spectrometric analysis of intact proteins or subunits of proteins (TOF MS/MS)

The software can analyze data that is collected with the Analyst TF and SCIEX OS software.

The Biologics Explorer software can annotate data from the ZenoTOF 7600 system, from MS/MS measurements of collisionally activated dissociation (CAD) and electron-activated dissociation (EAD) fragmentation.

The Biologics Explorer software is also compatible with data from TripleTOF 6600 and X500B QTOF systems.

Software Versions

The software is available with a subscription license. New versions of the Biologics Explorer software are released regularly. During the license period, users with active subscriptions can upgrade to the next version of the software. When new versions of the software become available, e-mails are sent with information about new features, as well as the download location on our website.

Related Documentation

Quick guides and workflow guidelines are available in the software. These documents give suggestions and best practices for the workflows for a variety of supported applications.

Biologics Explorer Software 6.0.3 Release Notes

Contextual help is available throughout the software. To open contextual help topics in a web browser, click the ? icon.

Note: An internet connection is required to get access to these topics.

New Features in Version 6.0.3

- Support for intact mapping of nucleotide-based compounds.
- Peptide mapping enhancements: Changes to modification localization and new automatic flagging options for data review.
- Display of pI peak properties for icIEF data.
- Template enhancements: Two types of templates are available, Template (blank) and Demo. The Template workflows do not contain data. Data files must be uploaded and sequence and modification information set before Template workflows are used. The Demo workflows contain data files and sequence information and can be used for training purposes.

Known Issues and Limitations

- Batch processing for peptide mapping is resource-intensive. It creates temporary files on the C:\ drive. To make disk space available, close the software and then open it again between batches.
- The Intact Nucleotide Mapping workflow processes one sample at a time. Multi-sample analysis is not supported.
- The **Release unused memory** button has been removed from the Resource manager. If the button was pressed again and again, then the software became unresponsive.

Installation

Requirements

Computer Requirements

- SCIEX Workstation Plus computer with:
 - Xeon 8 core processor
 - 32 GB RAM
 - 2 × 2 TB SSD storage disks, C:\ for the installation path for the Biologics Explorer software, and D:\ for the disk cache

Note: Newer systems might become available. For more information, contact the local sales representative. Older computer models might be compatible, but they have not been tested and performance might decrease.

Operating System Requirements

One of these operating systems is required:

- Windows 10, 64 bit
- Windows 11, 64 bit

Internet Requirements

- Internet access: Port 443 of the workstation must be open, so that the Package Manager can connect to the package server for access to the template workflows.
- Google Chrome browser

Install the Biologics Explorer Software

Prerequisites
<ul style="list-style-type: none">• A license key for Biologics Explorer software is available. The license key, also known as an activation ID (AID), is sent in an e-mail from SCIEX Now. If the license key is missing, then contact a SCIEX sales representative.

1. Log on to the computer as a Windows user with Administrator privileges.
2. Download the required `zip` file from sciex.com/software-downloads.

Tip! To prevent installation issues, save the file to the local computer, in a location other than the desktop. Then, before the installation starts, disconnect the external USB storage devices.

3. After the download is complete, right-click the downloaded file, and then click **Extract All**. By default, the files are extracted to the location where the `zip` file was saved.
4. Double-click `biologics_explorer-6.0.3.exe`. The SCIEX Biologics Explorer Setup window opens.
5. Obey the on-screen instructions to complete the installation. The installation wizard installs the Biologics Explorer software.

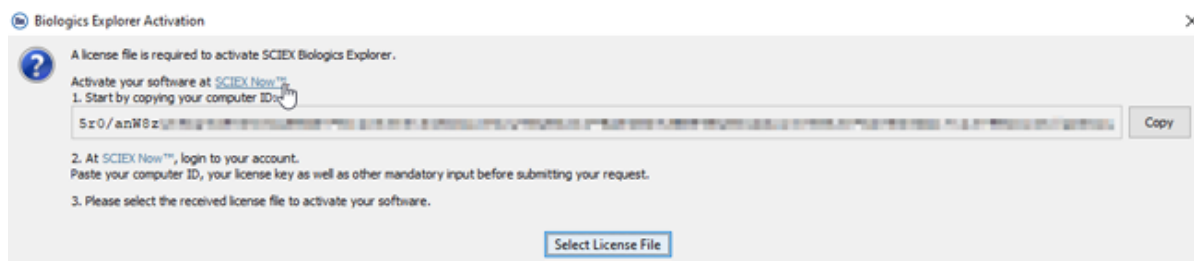
Note: When a prompt for the installation path is shown, use the default value, `C:\` or another local drive.

6. After the installation is completed, click **Finish**. The installation wizard opens the Biologics Explorer software. The Biologics Explorer Activation dialog opens. Continue with the section: [Activate the Software](#).

Activate the Software

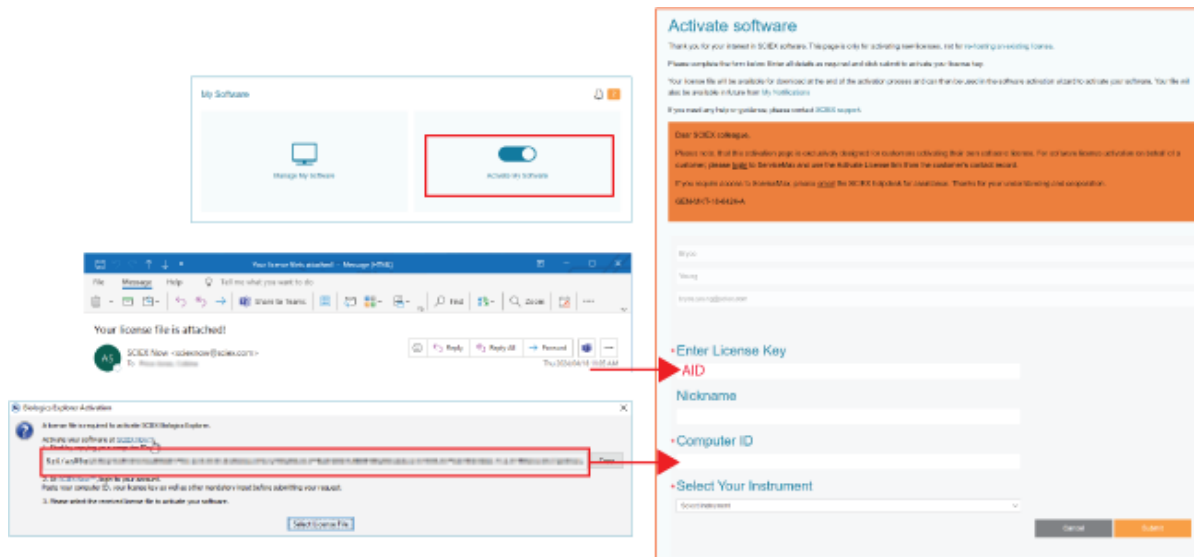
1. If required, then open Biologics Explorer.

Figure 1 Biologics Explorer Activation Dialog



2. To copy the computer ID to the clipboard, click **Copy**.
3. Click [SCIEEX Now](#).
The SCIEEX Now activation page opens in a web browser.
4. Log on to [SCIEEX Now](#).
5. Obey the instructions to get a software license.

Figure 2 Activate the Software



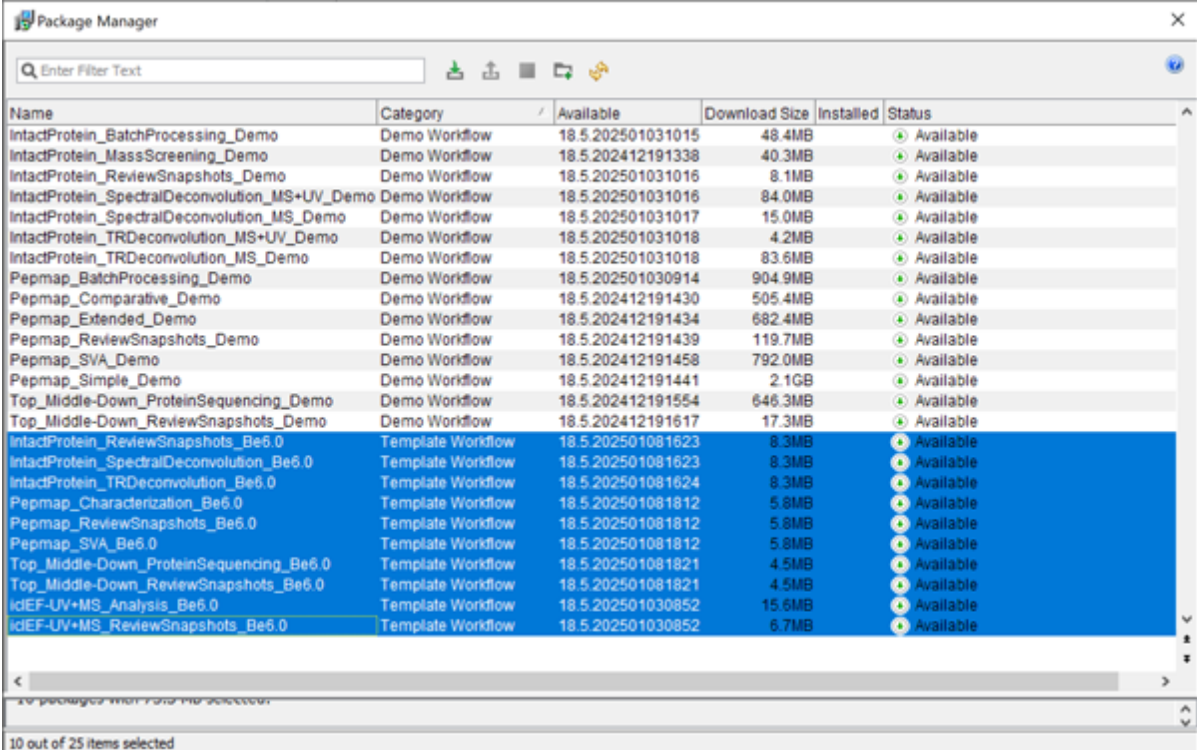
6. Open the Biologics Explorer software, and then click **Select License File**.
7. Browse to and select the license file, and then click **Load license**.
The software is activated.

Install the Workflow Package

Note: Workflow templates are updated regularly. We recommend the use of the latest version of a template, which is available through the Package Manager.

1. Open the Biologics Explorer software.
2. Click **Tools > Package Manager**.
The list of available workflow packages is shown.

Figure 3 Package Manager Window



Name	Category	Available	Download Size	Installed	Status
IntactProtein_BatchProcessing_Demo	Demo Workflow	18.5.202501031015	48.4MB		Available
IntactProtein_MassScreening_Demo	Demo Workflow	18.5.202412191338	40.3MB		Available
IntactProtein_ReviewSnapshots_Demo	Demo Workflow	18.5.202501031016	8.1MB		Available
IntactProtein_SpectralDeconvolution_MS+UV_Demo	Demo Workflow	18.5.202501031016	84.0MB		Available
IntactProtein_SpectralDeconvolution_MS_Demo	Demo Workflow	18.5.202501031017	15.0MB		Available
IntactProtein_TRDeconvolution_MS+UV_Demo	Demo Workflow	18.5.202501031018	4.2MB		Available
IntactProtein_TRDeconvolution_MS_Demo	Demo Workflow	18.5.202501031018	83.6MB		Available
Pepmap_BatchProcessing_Demo	Demo Workflow	18.5.202501030914	904.9MB		Available
Pepmap_Comparative_Demo	Demo Workflow	18.5.202412191430	505.4MB		Available
Pepmap_Extended_Demo	Demo Workflow	18.5.202412191434	682.4MB		Available
Pepmap_ReviewSnapshots_Demo	Demo Workflow	18.5.202412191439	119.7MB		Available
Pepmap_SVA_Demo	Demo Workflow	18.5.202412191458	792.0MB		Available
Pepmap_Simple_Demo	Demo Workflow	18.5.202412191441	2.1GB		Available
Top_Middle-Down_ProteinSequencing_Demo	Demo Workflow	18.5.202412191554	646.3MB		Available
Top_Middle-Down_ReviewSnapshots_Demo	Demo Workflow	18.5.202412191617	17.3MB		Available
IntactProtein_ReviewSnapshots_Be6.0	Template Workflow	18.5.202501081623	8.3MB		Available
IntactProtein_SpectralDeconvolution_Be6.0	Template Workflow	18.5.202501081623	8.3MB		Available
IntactProtein_TRDeconvolution_Be6.0	Template Workflow	18.5.202501081624	8.3MB		Available
Pepmap_Characterization_Be6.0	Template Workflow	18.5.202501081812	5.8MB		Available
Pepmap_ReviewSnapshots_Be6.0	Template Workflow	18.5.202501081812	5.8MB		Available
Pepmap_SVA_Be6.0	Template Workflow	18.5.202501081812	5.8MB		Available
Top_Middle-Down_ProteinSequencing_Be6.0	Template Workflow	18.5.202501081821	4.5MB		Available
Top_Middle-Down_ReviewSnapshots_Be6.0	Template Workflow	18.5.202501081821	4.5MB		Available
IdEF-UV+MS_Analysis_Be6.0	Template Workflow	18.5.202501030852	15.6MB		Available
IdEF-UV+MS_ReviewSnapshots_Be6.0	Template Workflow	18.5.202501030852	6.7MB		Available


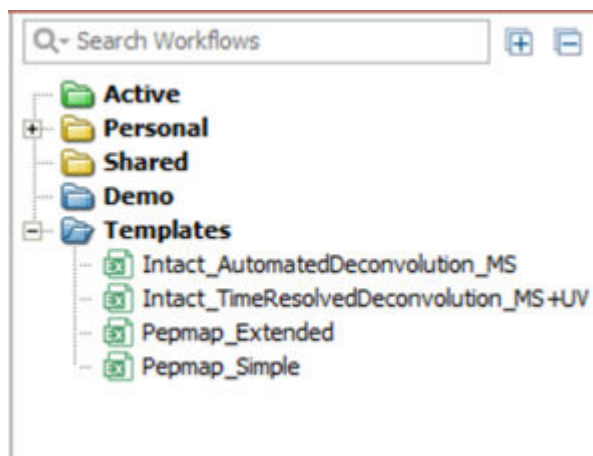
3. Click  **(Install Package)**.
The downloaded workflow is available in the applicable folder, Templates or Demo.

Figure 4 Templates Folder



Tip! To create and use customized workflows, refer to the document: *Quick Start Guide*.

Remove the Biologics Explorer Software

Prerequisites

- Remove installed HotFixes for the Biologics Explorer software.


1. Log on to the computer as a Windows user with Administrator privileges.
2. Click **Start > Control Panel > Programs and Features**.

Tip! If the control panel components are shown by **Category**, then click **Start > Control Panel > Programs > Programs and Features > Uninstall a program**.

3. Select **SCIEX Biologics Explorer**, and then click **Uninstall**.

The software is removed. User intervention is not required.

Note: The license file is not removed and can be used if the Biologics Explorer software is installed again.

Note: As an alternative, click  (**biologics_explorer Administration**) to remove the software.

Frequently Asked Questions

The C:\ and D:\ drives contain folders for Biologics Explorer. What are these folders used for?

By default, the software is installed on the C:\ drive, and processed data is kept in the C:\Home folder. During processing, data is kept in the D:\Cache folder. To monitor resource consumption during processing, click **Tools > Resource Status**.

Can I install the software on a laptop that only has a C:\ drive?

For optimal performance in routine use, we recommend the use of the SCIEX Workstation Plus. Refer to the section: [Computer Requirements](#).

However, for the purposes of demonstration, training, and nonroutine usage, the software can be installed on a laptop with a single hard drive. The installation program automatically detects that the computer has a single hard drive and adjusts to this configuration.

Can I install the software on a processing computer that does not meet the recommended requirements?

Yes. However, the software processing speed is best when the computer meets the specified requirements.

Do multiple users of the software require separate license files?

No. The license file is related to the computer on which the software is installed.

My installation is now complete. How can I start my processing?

Select the workflow template that is applicable to the application, copy the template into a `Personal` folder, open the template, add data files and customize the parameters, and then save the workflow with a different name.

As an alternative, open the template in the `Templates` folder, add data files and customize the parameters, and then save the workflow with a different name.

How much time does the installation usually require?

The installation and download of all workflow templates usually requires less than 30 minutes on the recommended computer.

Biologics Explorer Software 6.0.3 Release Notes

We use the D:\ drive to keep raw data files. Is there a minimum amount of free disk space that we should keep on the D:\ drive?

For the most efficient data post-processing in the Biologics Explorer software, we recommend that at least 250 GB of free disk space be available on the D:\ drive.

Can the software be installed on a drive other than the C:\ or D:\ drive?

No. We recommend that the software only be installed on these drives.

Contact Us

Addresses



Made in Singapore
AB Sciex Pte. Ltd.
Blk33, #04-06 Marsiling Industrial Estate Road 3
Woodlands Central Industrial Estate, Singapore 739256

**SCIEX
Headquarters**

AB Sciex LLC
500 Old Connecticut Path
Framingham, Massachusetts 01701
USA

Customer Training

- Global: sciex.com/contact-us

Online Learning Center

- [SCIEX Now Learning Hub](#)

SCIEX Support

SCIEX and its representatives have a global staff of fully-trained service and technical specialists. They can supply answers to questions about the system or any technical issues that might occur. For more information, go to the SCIEX website at sciex.com or use one of the following links to contact us.

- sciex.com/contact-us
- sciex.com/request-support

Cybersecurity

For the latest guidance on cybersecurity for SCIEX products, visit sciex.com/productsecurity.

Documentation

This version of the document supersedes all of the previous versions of this document.

The latest versions of the documentation are available on the SCIEX website, at sciex.com/customer-documents.

Note: To request a free, printed version of this document, contact sciex.com/contact-us.

This document is provided to customers who have purchased SCIEX equipment to use in the operation of such SCIEX equipment. This document is copyright protected and any reproduction of this document or any part of this document is strictly prohibited, except as SCIEX may authorize in writing.

Software that may be described in this document is furnished under a license agreement. It is against the law to copy, modify, or distribute the software on any medium, except as specifically allowed in the license agreement. Furthermore, the license agreement may prohibit the software from being disassembled, reverse engineered, or decompiled for any purpose. Warranties are as stated therein.

Portions of this document may make reference to other manufacturers and/or their products, which may contain parts whose names are registered as trademarks and/or function as trademarks of their respective owners. Any such use is intended only to designate such products as those manufacturers' products and does not imply any right and/or license to use or permit others to use such manufacturers' and/or their product names as trademarks.

SCIEX warranties are limited to those express warranties provided at the time of sale or license of its products and are the sole and exclusive representations, warranties, and obligations of SCIEX. SCIEX makes no other warranty of any kind whatsoever, expressed or implied, including without limitation, warranties of merchantability or fitness for a particular purpose, whether arising from a statute or otherwise in law or from a course of dealing or usage of trade, all of which are expressly disclaimed, and assumes no responsibility or contingent liability, including indirect or consequential damages, for any use by the purchaser or for any adverse circumstances arising therefrom.

(GEN-IDV-09-10816-E)

For Research Use Only. Not for use in Diagnostic Procedures.

Trademarks and/or registered trademarks mentioned herein, including associated logos, are the property of AB Sciex Pte. Ltd., or their respective owners, in the United States and/or certain other countries (see sciex.com/trademarks).

AB Sciex™ is being used under license.

© 2025 DH Tech. Dev. Pte. Ltd.