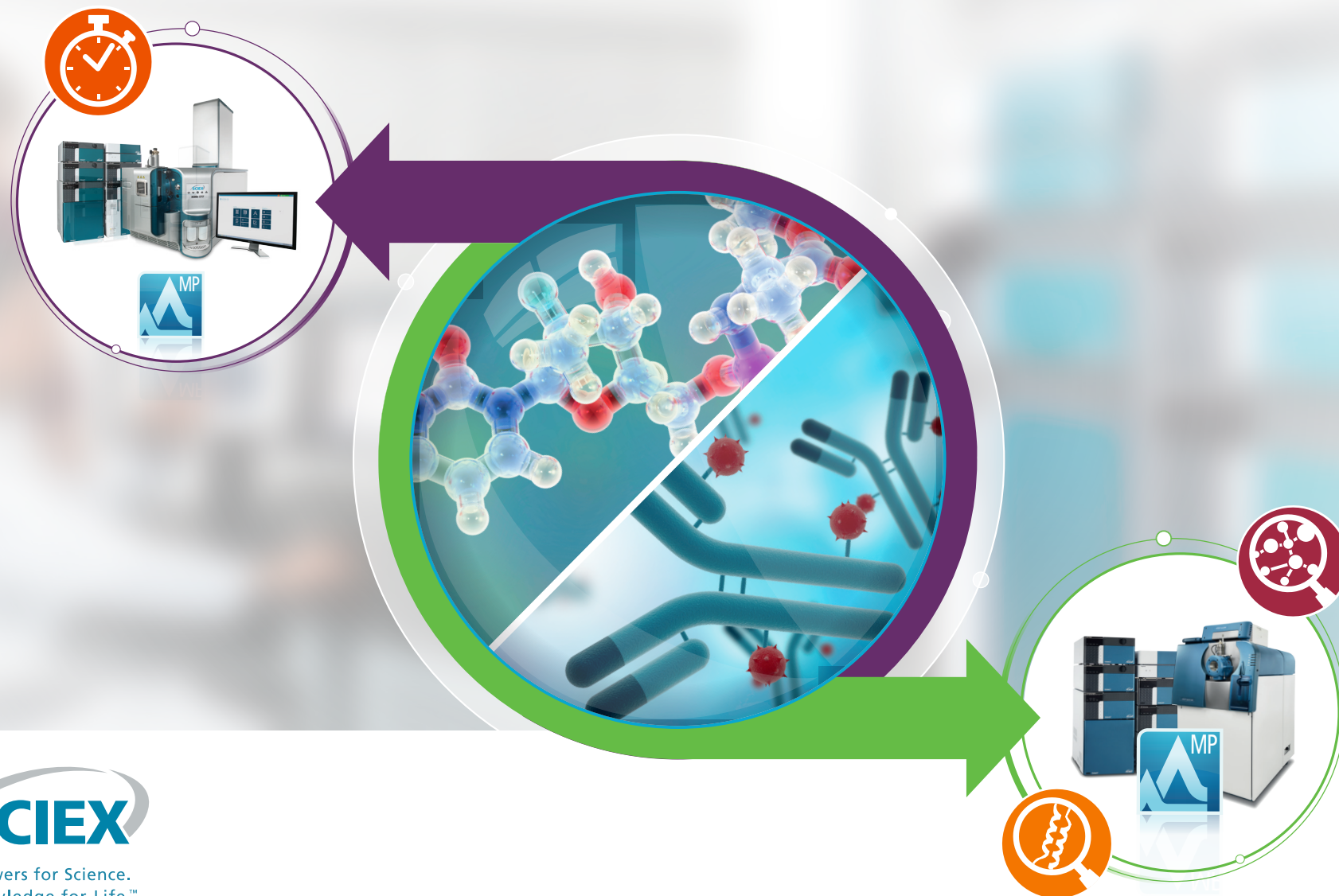


High Productivity, Total Confidence

Routine and Advanced Biotransform Solutions



Welcome to the SCIEX Biotransform Solutions

Biotransformation studies are a necessary part of therapeutic development, for both small and large molecule drugs. Whether you're working against the clock to locate soft spots and identify metabolites in drug discovery or you need total confidence that you're identifying every detectable metabolite or peptide catabolite in drug development SCIEX offers an integrated solution to meet your requirements.

Our LC-MS systems, software and support can help you achieve the productivity and throughput you need to keep your projects moving, and we can help you achieve complete confidence that you're not missing any low level or parent-like metabolite in your sample.

What's more, SCIEX is the first LC-MS provider to enable automated identification of small molecule metabolites and biotherapeutic catabolites in a single software interface, MetabolitePilot™ Software 2.0. You'll save precious time and resources by avoiding manual assignment of complex metabolites and catabolites.

Explore the Biotransform Solutions from SCIEX, and learn how to transform your metabolism studies.

Routine MetID and Soft Spot Analysis

Fast, Efficient, and Simplified Routine MetID

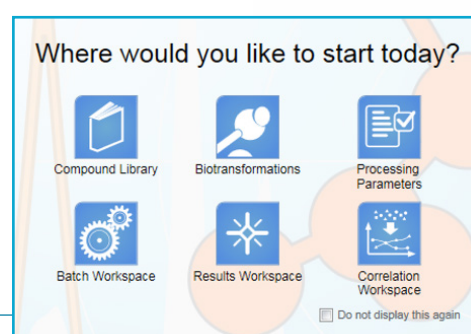
Quickly identify soft spots and the top metabolites to maximize therapeutic candidate effectiveness

The revolutionary **X500 QTOF Platform** is compact, robust and streamlined. And with the renowned, robust Turbo V™ ionization source, you'll spend more time running samples and less time worrying about keeping your system up and running



Point-and-click **SCIEX OS software** makes setting up and running methods simple. Run small molecule and large molecule MetID and stability studies quickly and efficiently.

All-in-one **MetabolitePilot™ Software 2.0** makes metabolite identification fast and accurate, with batch data import and automated method generation for up to 200 samples at a time.



Advanced, Comprehensive Metabolism and Catabolism

Confident and Comprehensive Advanced Metabolism and Catabolism

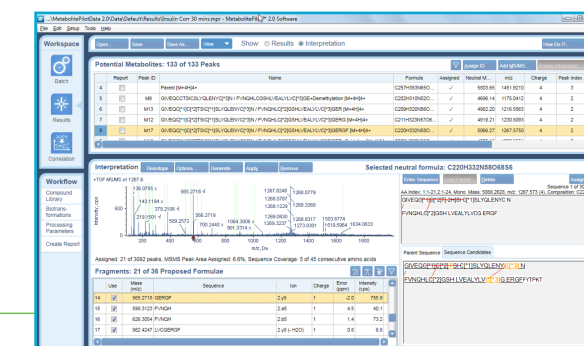
Gain a comprehensive understanding of your drug metabolites or biotherapeutic catabolites, with the confidence that low level components are not missed.

The high definition **TripleTOF® 6600 QTOF System** offers the linear dynamic range and sensitivity required for detection of low level metabolites and catabolites in complex matrices. Ultra fast QTOF acquisition rates provide high-resolution data even at UHPLC timescales.



Obtain comprehensive and unbiased data with **SWATH® Acquisition** to store high-resolution MS/MS data for all detectable metabolites and catabolites in a single injection. Nothing hides from SWATH®.

Automatically identify and determine structures for metabolites and catabolites with **MetabolitePilot Software 2.0**. Advanced visualization tools let you monitor metabolites over time or across species with ease.



Your Success is Our Success

We take it personally

As a SCIEX customer you have access to a world-class customer support organization. Wherever you are, we're there with you as a trusted partner to answer questions, provide solutions, and maximize lab productivity.

Our customer support organization has access to the latest product updates, software revisions, methods and repair procedures to make sure that you stay on top of your game.

When you have questions, we have answers.

Learn more at sciex.com/customersupport, or locate your local account representative at sciex.com/contactus

For more information about SCIEX Biotransform Solutions, visit sciex.com/biotransform

Answers for Science.
Knowledge for Life.™

AB Sciex is doing business as SCIEX.

© 2017 AB Sciex. For Research Use Only. Not for use in diagnostic procedures. The trademarks mentioned herein are the property of AB Sciex Pte. Ltd. or their respective owners. AB SCIEX™ is being used under license.

RUO-MKT-03-5336-A

Headquarters

500 Old Connecticut Path
Framingham, MA 01701 USA
Phone 508-383-7700
sciex.com

International Sales

For our office locations please call the division headquarters or refer to our website at sciex.com/offices

